



NEW STUDENT GUIDE

Postgraduate Research Students

Everything you need to know to get started with your research degree!

2022-23

1495
 UNIVERSITY OF
ABERDEEN

WELCOME

Welcome to the University of Aberdeen. We know there is a lot to do and think about before you arrive but don't worry, we are here to help. This guide will help you settle into University and your degree.



**Book Student
Accommodation**



**Making your way
to Aberdeen**



**Stay
Connected!**



ARRIVING

in Aberdeen

Driving & Parking

Will you be moving into halls and bringing your car? Read the parking FAQs on the accommodation website

abdn.ac.uk/accommodation/faq

Coach/Train

If you are arriving by coach or train, these stations are both within Union Square Shopping Centre. It's recommended you take a taxi to your accommodation via the taxi rank (approx: £20).

Airport

If you take a flight into Aberdeen, you can either take the **Jet 727 bus** to town or a taxi direct to your accommodation.



TOP TIPS

- Keep important information to hand
- Note your destination postcode:
Student Accommodation postcodes
- Download the **First Bus** and **Stagecoach** mobile apps to purchase tickets.

LIVING

in University Accommodation

If you haven't booked your accommodation yet, please contact the Accommodation Office. You will also be able to find lots of information on the [accommodation website](#).

Email: studentaccomm@abdn.ac.uk

Web: abdn.ac.uk/accommodation

Meet your Flatmates

When you have been allocated a room, you will be able to join your **student accommodation Facebook Group**. You can chat to your flatmates before you arrive, organise buying shared kitchen items, and plan social activities together.



TOP TIPS

- **WiFi set up** - Do you like to play video games online? We have a specific WiFi network just for that!
- **Set up a payment plan**
- **Get a TV Licence**

REGISTRATION

Step 1

START

Complete your student registration by completing these steps before your arrival in Aberdeen.

- **Activate your IT account, email and password**[🔗]
This can only be done 30 days before course start date. Remember your password as it's used to access everything, including WiFi.[🔗]
- **Complete Online Registration**[🔗]
(For PGR students, step 1 only)
- Check & update your personal details Upload your photo[🔗]: make sure you do this so your ID card is ready for when you arrive.
- Complete eRegistration.[🔗]
- If you are not in receipt of a studentship or are being sponsored, you must pay at least 50% of your tuition fees for the academic year.

Step 3

JOIN US

Orientation and Induction.

- Your School will usually arrange induction to introduce you to key people and provide orientation. Please make sure that you check with them about what this involves for you.
- The Postgraduate Research School (PGRS)[🔗] will be holding a welcome reception in October. Please check our website for more details.

Step 2

MEET

Meet with your School and Supervisor when you arrive in Aberdeen.[🔗]

- Once you arrive in Aberdeen, make your way to your School Office and introduce yourself to the PGR administrative staff.

Once you have met with your supervisor, you can collect your ID card from Infohub.

International students must bring:

- Your passport
- BRP Card (if applicable)
- ATAS certificate (if applicable)

You need a visa check if...

- You're here on a Tier 4 Visa
- You pay fees as an overseas student

Step 4

STAY IN TOUCH

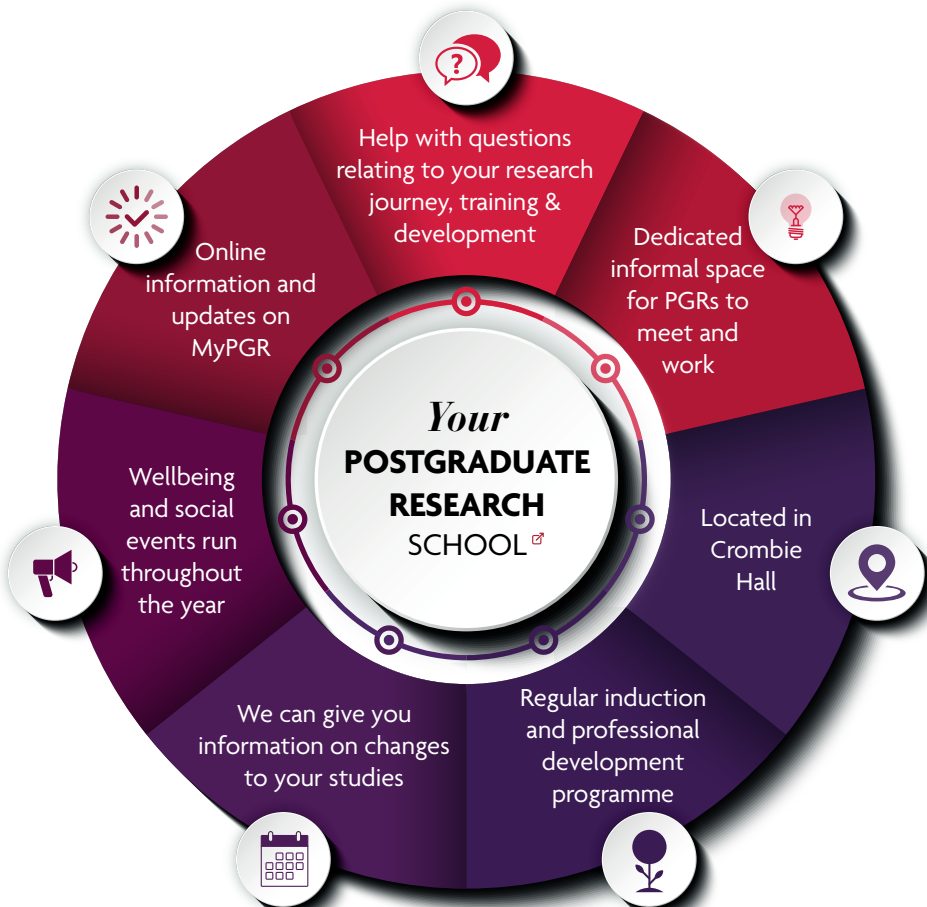
Get Connected!

- Join the **StudentLifeUoA** Facebook[🔗] or Twitter[🔗] feeds. They are an invaluable source of news, information, deals and promotions.
- You can also keep up to date by following the PGRS Twitter[🔗] and Facebook.[🔗]

PGRS Information

The Postgraduate Research School (PGRS) is the base for a friendly team which deals with all PGR-related activities.

We work in partnership with Schools and Professional Services colleagues to connect you with other students across disciplines, and support your professional and career development. We love having our PGR students visit us, so please come to Crombie Hall to say hello when you arrive or email us with any questions at graduateschool@abdn.ac.uk!



RESOURCES

Enhance your academic or social life by using these amazing University services.

Infohub [↗](#)

The one-stop shop to help you with anything you need including:

- Payment of fees and accommodation (cash not accepted)
- Bank letters, council tax exemptions
- Proof of study and student record cards
- ID cards
- Accommodation information
- Access to Registry Officers

Careers Service [↗](#)

Browse jobs and internship opportunities, book appointments with careers staff, and sign up for our workshops and employer events through the website.

Multi-faith Chaplaincy Centre [↗](#)

Whether you have a faith or not, you're welcome to come and speak to our team of chaplains who will assist you with any problems.

Libraries [↗](#)

Get access to books, journals, and information workshops to support your learning and studies. Library staff in any of our three libraries will help you get the best out of our facilities, collections, and services.

Aberdeen Sports Village [↗](#)

Scotland's premier sports and exercise facility supporting high performance student athletes and University sports clubs through the Sport & Exercise Team. There are gym memberships to suit all budgets. Pop in past to find out more or visit their website.

Doctor/Dentist Registration

Register as soon as you arrive as you don't want to wait until you get sick

- Where you can register depends on where you live in Aberdeen
- Once you are registered with a doctor, you can register with an NHS Dentist

Tier 4 students will have been required to pay the Immigration Health Surcharge (IHS) and will have access to National Health Service (NHS) treatment when they arrive.

- Payment is required for dental treatment
- If you extend your visa, you must make an additional payment
- Short Term (Go Abroad) students must ensure they have their medical insurance before arriving
- EEA & Swiss Nationals should have their EHIC from their country of residence

YOUR SERVICES

Support services are here to help you with any aspect of your academic, personal or social life.

Student Advice & Support Office [↗](#)

Support on a range of issues including support for:

- Financial issues
- Disabilities
- Specific learning differences
- Mental health
- Visas and Immigration
- Personal issues

Staff are based in the Students' Union Building on King's Campus.

Welfare Support in Halls [↗](#)

A Community Liaison Officer and a team of Student Resident Assistants are on hand to help you during your time staying with us in University Accommodation. We can help with:

- Homesickness
- Exam worries
- Relationship/family issues
- Flatmate tensions
- Social events and community building

Counselling Service [↗](#)

Our counselling service are available to meet with you to talk confidentially about issues causing you concern. They also have a host of self-help guides on a range of issues available on their website

Digital Services [↗](#)

As a University of Aberdeen student you can benefit from a wealth of digital technology and expertise. The

IT Service Desk [↗](#) is your first point of contact for IT support. Drop in to Sir Duncan Rice Library or 1:122 Polwarth.

Look After Your Mate [↗](#)

Undertaking a research project can be a rewarding experience but it can also be challenging at times. The Postgraduate Research School runs Look After Your Mate sessions throughout the year. These sessions help to give you the tools to talk about health and wellbeing in your postgraduate research community. Please check the PGRS website for details of the next course. [↗](#)

SLS (Student Learning Service) [↗](#)

The SLS offers a range of workshops, online resources and 1-2-1 sessions on various academic skills, e.g. maths, critical thinking, academic writing, study strategies and time-management.

AUSA



AUSA is a student-led organisation, here to support, empower, represent you and enhance your University experience.

PGR Reps [↗](#)

PGR reps are elected at the beginning of an academic year or semester, and represent your views and concerns about courses or programmes, ensuring they are the best they can be.

AUSA Advice [↗](#)

AUSA Advice offers free and impartial advice to students. You can visit us for support with anything from academic advice, health & wellbeing, part-time employment and housing.

Union Brew [↗](#)

AUSA's bar and café on the ground floor of the Students' Union Building. Open during the day and often home to evening events such as pub quizzes, open mics and student-run events.

Sports and Societies [↗](#)

With 55+ sports clubs and 150+ societies – we have something for everyone! Joining a club or society is a great way to meet new people and experience new things.

Raising & Giving [↗](#)

RAG is a student run committee that raises thousands of pounds for projects in the Aberdeen area through events, fundraising activities and partnerships with other students.




AberGreen [↗](#)

AberGreen is a community-led sustainability education project that aims to help the university community reduce its carbon footprint through fun and interactive events.

More information

 [abdnunisa](#)

 [ausatweet](#)

 [aberdeenunisa](#)

web: [ausa.org.uk](#)



GET IT ON
 Google Play



Download on the
 App Store