

1495



ResearchBite – Identifying Research Funding Opportunities

Aberdeen
**Grants
Academy**

Research &
Innovation

Dr Andrew Phillips
Research And Innovation



Welcome –ResearchBite Finding Funding



- Explore how to identify and understand types of available internal and external research funding sources.
- Signposts to internal resources via the Grants Academy and to external resources via online tools and funders web-pages.
- A live demonstration of an online funding database and group discussion.

Grants Academy

<https://www.abdn.ac.uk/grantsacademy>



- Against a back drop of a challenging landscape and success rates at UK funders.
- Identified a need to ***“strengthen existing supportive mechanisms available to colleagues preparing grant applications”***

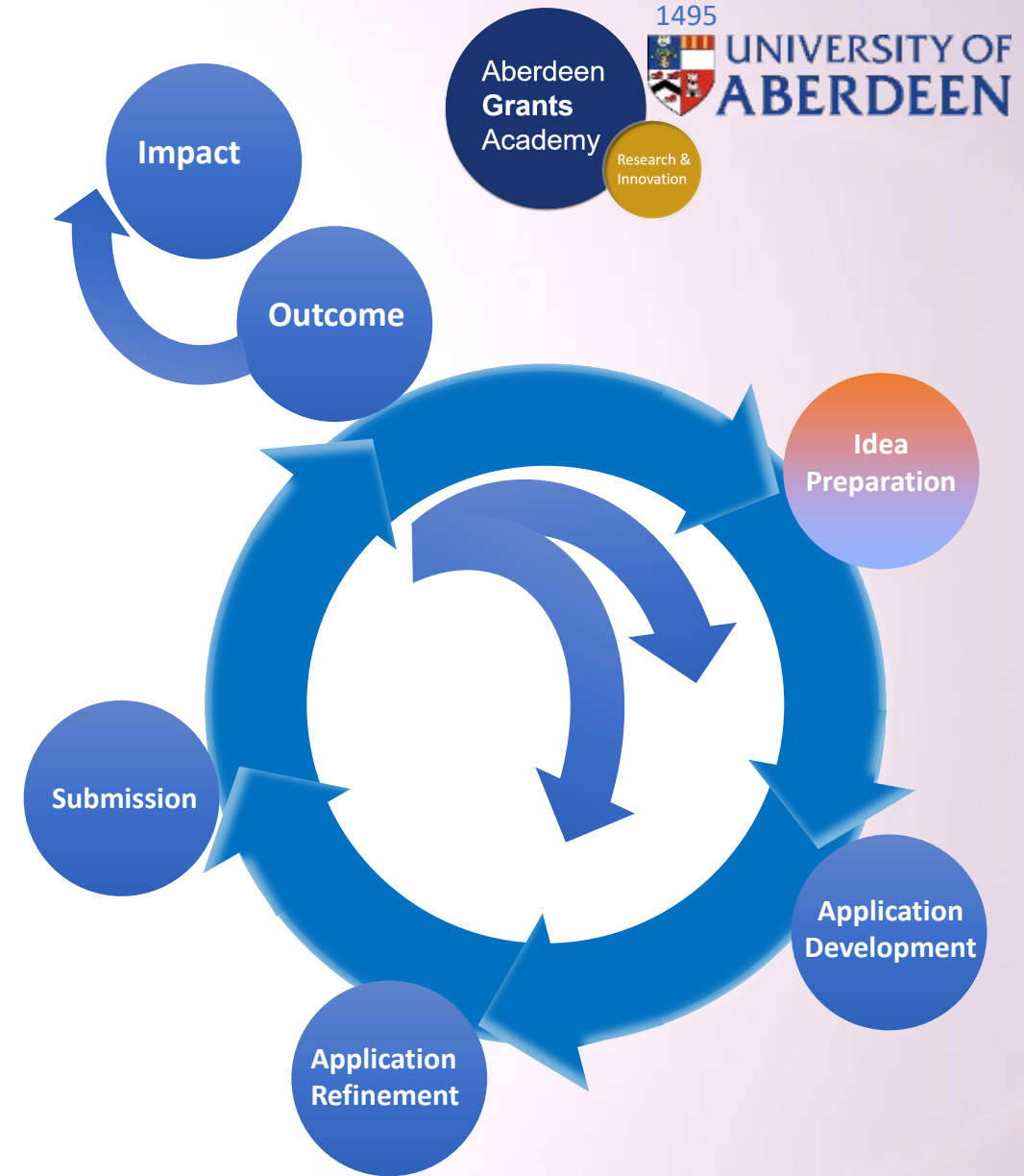
Grants Academy Aims



- Offer a comprehensive **programme of development**, directly linked to our strategic objectives.
- Significantly **enhance our research environment**, which will directly impact our REF submission.
- **Enhance career prospects** of all researchers, but particularly those at earlier career stages who may need more assistance to build their external research grant portfolio.
- Offer the ability to be better prepared for opportunities and **enhance our ability to respond to calls**.

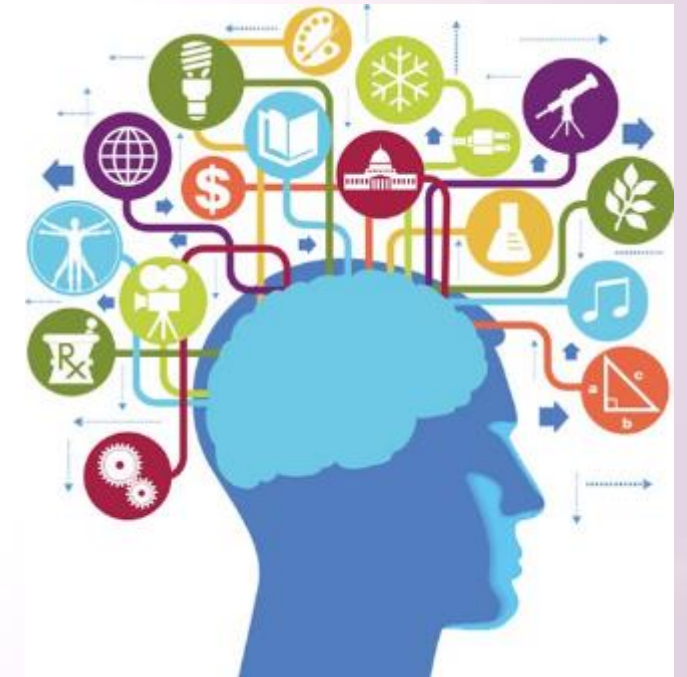
Goals of the Grants Academy

- Support at **ALL STAGES** of the research grant life cycle: *conception of ideas, through development and refinement of an application, to research delivery and realising impact of the research we undertake.*
- **Measureable increase in the quality and quantity** of research grant applications.
- Sharing best practice and training.



How the Grants Academy Works

- Developed as a series of interwoven elements including sandpits to support the development of ideas and projects, grant writing workshops, rebuttal support, support for delivery of outcomes and outcomes management and more.
- Relevant to today, supports:
 - Effective horizon scanning
 - Facilitation of early ideas development
 - Supporting interdisciplinary working



Grants Academy

<https://www.abdn.ac.uk/grantsacademy>



Grants Academy

[University Home](#) / [StaffNet](#) / [Research and Knowledge Exchange](#) / [Grants Academy](#)

< [University Home](#)

< [StaffNet](#)

< [Research and Knowledge Exchange](#)

[Grants Academy](#)

[About Us](#)

[Global Challenge Research Fund](#)

[Internal Pump-Priming Funds](#)

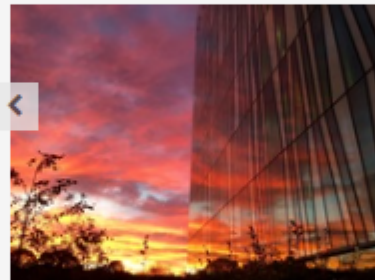
[External Funding](#)

[Newton Fund](#)

[Training](#)

[Calendar of News and Events](#)

The Grants Academy supports our researchers in all stages of the research grant cycle, from conception of ideas, through development of high quality funding applications to research delivery and realising the impact of our research.



ResearchBites - Consultancy and Contract Research - What is the Difference? 16 October 2019 12:00-13:30 Crombie A03

Learn more about these important sources of income and the support available from first approach to project conclusion. Find out the steps involved, the forms to complete, the pros & the cons...

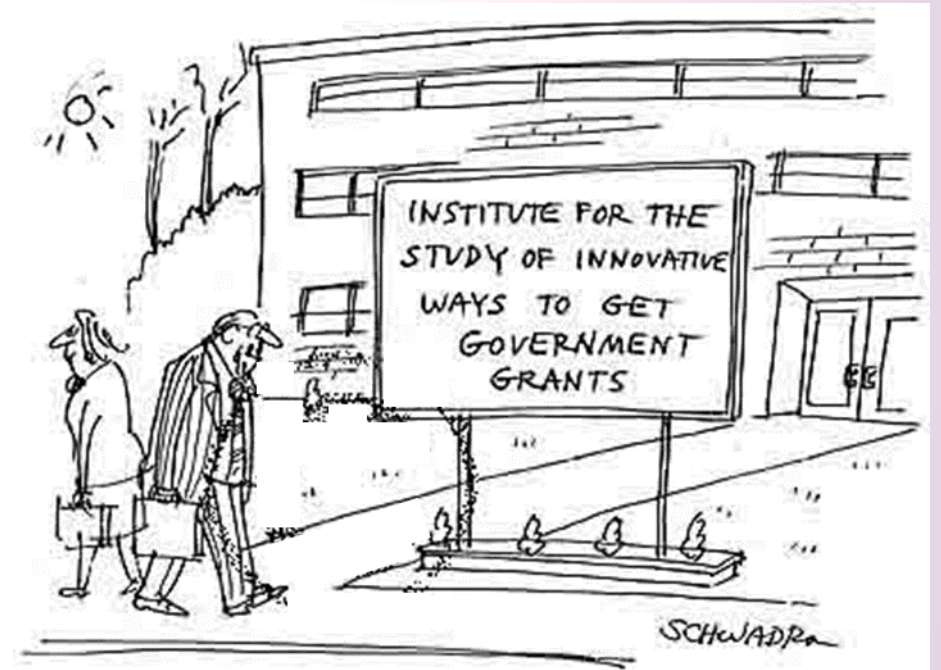
A structured framework of support to:

1. significantly enhance our research environment, which will directly impact our REF submission.



To consider before seeking funding?

- What's the **big question**?
- Why is it **important**?
- Does it fit **RCUK (or charity) strategy**?
- Why are **you** the person(s) to address it?
- Why should it be done **now**?
- Do you have a research **strategy**?
- What is **novel**?
- What will the **impact** be?



What type of funding / career stage

- Research Grants
- Travel Grants
- Equipment
- Pump-priming
- Early Career – named on grants
- Fellowships
- Impact and Knowledge Exchange
- Translation
- Public Engagement
- Tenders

© Original Artist
Reproduction rights obtainable from
www.CartoonStock.com



"I was close to a breakthrough when
the grant money ran out."

Research Career Stages



Employed on grant

First responsibility is to deliver research findings

Named on grant

Some input into application

Applicant on grant

Application for salary
Joint with PI – roles?

Fellowship

You write the application

Fellowship Traffic Light Process

- Attend internal fellowship workshop in spring and submit documentation

5 Steps to fellowship applications



1. Early induction workshop: Early career researchers

This mandatory induction workshop will introduce the types of fellowship schemes that are available and provide information on the benchmarks of competitiveness that should be achieved. An early grant writing course, which is part of the induction, will focus on managing expectations and in enabling prospective candidates to focus on the c.v.-building aspect of their careers.



2. Complete required documents

You are required to complete a survey indicating the funders/schemes they wish to target, along with an abstract of their proposed project and CV. These form the basis of discussions in step 4. Not all early career researchers will be aiming to submit applications within a year, but completion of the survey by all will help forward plan for future years.



3. The Spring traffic-light interview

All potential applicants are interviewed by a group of senior staff to critically assess the strength of their project proposal. The interview outcome will be classified as follows, in descending order of grade: Green, Yellow and Red. Follow the link provided for more information or download the full document.



4. Institutional endorsement

High rated applications will be considered for endorsement in the context of future strategic plans. Green-rated applicants may not be supported if they intended developing a research field outside the strategic ambit of the College. In this case, support could be given to use the fellowship mechanism to enable their relocation to another institution.



5. Personal timetable

After interview and endorsement, the successful candidates will be assigned an Application Mentor, peer reviewer(s) and fellowship buddy, and be given a personal timetable towards submission. Peer reviewers must see *complete applications* and will report back to the traffic light committee with their comments.



Required documents

[Briefing document](#)
[Timetable of Events for 2014 Cycle](#)
[CLSM Fellowship process induction workshop](#)
[Medicine and Medical Sciences Fellowship Opportunities](#)

Forms:

[Intention proforma](#)
[Abstract proforma](#)
[CV proforma](#)
[Interview proforma](#)
[Personalised timetable](#)

- Traffic Light 'Interview' with senior staff (green, amber, red)
- Allocation of application mentor, peer reviewers and timeline!

Funder's Perspective

- Little time
- Pressure on funds
- Priorities and politics
- Pressure to be impartial
- Pressure to short list (grants which don't play by the rules are the easiest to eliminate)
- The panel may not know you
- The panel does not necessarily care about your subject
- Panel may have no specialist in your area

So, what shall we do with the \$19.10 this year?



Funder's Perspective

- Assume panel sees 80 grants/ round
- ~5 will be truly exceptional and will be funded with little further analysis;
- The majority (~60) will not receive serious consideration due to intrinsic faults leading to adverse consequent referee's comments;
- ~15 will be argued over - some will fail and others be funded;
- **the committee need to be convinced!**

Establishing credibility (risk reduction)

- Track record
 - previous grants
 - publications
- Pilot study
 - existing research projects
 - summer students
 - honor's students projects
 - appendices
- Compete or collaborate?
 - letters of support
 - offers of materials
 - offers of expertise



Improving Chances of Success

- Start early and plan in advance
- Accept mentoring and internal peer review
- Be positive but be realistic
- Read and follow the rules
- Present case logically and simply
- Justify the importance of your research
- Ensure essential collaborations are in place
- Make sure the outcomes are clearly stated



Bus Stop Challenge



Write 3 sentences that convey the essence of your next grant

36 words max; 5 min

- Research Problem; Strategy; Importance.

Pass to person on left, who summarizes it (as if for grant committee).

Promote Use of RESEARCHconnect

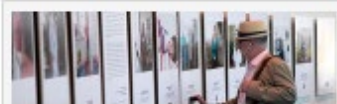
<https://www.researchconnect.co.uk>



The screenshot shows the RESEARCHconnect website interface. At the top left is the RESEARCHconnect logo with the tagline 'an idox solution'. To the right, there is a 'Personalise this page' button, a welcome message 'Welcome Andrew Phillips | Logout', and a 'Helpdesk: 03330 111 666' button. Below this is a navigation menu with items: HOME, ABOUT US, SEARCH, NEWS, MY RESOURCES, LIBRARY, BULLETINS, ADMINISTRATION, INTELLIGENCE, TRAINING, and CONTACT US. A dark banner below the menu contains the text 'RESEARCHconnect - An all-encompassing research funding solution, providing comprehensive grants information to the UK research community.' and two search buttons: 'Search RESEARCHconnect' and 'Search POLICYfinder'. Below the banner is a green bar with the text '*Latest product developments*' - click here to discover all with our What's New? flyer (pdf). The main content area is divided into four sections: 'Research funds added' with a list of dates and titles like 'ISFG Scientific Prize' and 'ECTS/Eli Lilly Healthcare Provider Scholarships 2017'; 'Latest research calls' with dates and titles like 'Horizon 2020 - Societal Challenges - Secure Societies' and 'NERC Open Knowledge Exchange (KE) Fellowship Scheme'; 'Upcoming research deadlines' with dates and titles like 'Anglo-Danish Society Scholarships' and 'APS EEP Edward F Adolph Distinguished Lectureship'; and 'Research news' with dates and titles like 'NERC and ESRC Announce New Knowledge Exchange Fellowship Opportunity' and 'Advance Notice of NERC Innovative Monitoring Approaches Call'. On the right side of the main content area is a 'Twitter feed' widget showing tweets by @RESEARCHconn3ct, including one about 'UK Government proposes amendments to Higher Education and Research Bill'.

Looking for Research Funding Opportunities?
The University of Aberdeen subscribes to the web-based funding service at [RESEARCHconnect](https://www.researchconnect.co.uk) a comprehensive and reliable source of funding opportunities. You can save complex searches to re-run at a later date or set-up automated email alerts for funding opportunities. Guidance and further information available [here](#).

UK Research and Innovation brings together the seven Research Councils, Innovate UK and a new organisation, Research England.



Arts and Humanities Research Council (AHRC)

AHRC funds world-class, independent researchers in a wide range of subjects. Their research provides social and cultural benefits and contributes to the economic success of the UK but also to the culture and welfare of societies around the globe.



Biotechnology and Biological Sciences Research Council (BBSRC)

BBSRC invests in world-class bioscience research and training. Their research is helping society to meet major challenges, including food security, green energy and healthier, longer lives and underpinning important UK economic sectors, such as farming, food, industrial biotechnology and pharmaceuticals.



Economic and Social Research Council (ESRC)

ESRC is the UK's largest funder of research on the social and economic questions facing us today. Their research shapes public policy and contributes to making the economy more competitive, as well as giving people a better understanding of 21st century society.



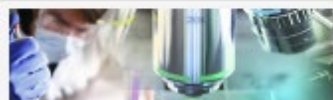
Engineering and Physical Sciences Research Council (EPSRC)

EPSRC invests in world-leading research and postgraduate training across the engineering and physical sciences. Their research builds the knowledge and skills base needed to address scientific and technological challenges and provides a platform for future UK prosperity by contributing to a healthy, connected, resilient, productive nation.



Innovate UK

Innovate UK works with people, companies and partner organisations to find and drive the science and technology innovations that will grow the UK economy. They drive growth by working with companies to de-risk, enable and support innovation.



Medical Research Council (MRC)

MRC is at the forefront of scientific discovery to improve human health. Their scientists tackle some of the greatest health problems facing humanity in the 21st century, from the rising tide of chronic diseases associated with ageing to the threats posed by rapidly mutating micro-organisms.



Natural Environment Research Council (NERC)

NERC is the driving force of investment in environmental science. Their leading research, skills and infrastructure help solve major issues and build



Research England

Research England is a new council within UK Research and Innovation. Taking forward the England-only responsibilities of HEFCE in relation to research and knowledge exchange, Research



Science and Technology Facilities Council (STFC)

STFC is a world-leading multi-disciplinary science organisation. Their research seeks to understand the Universe from the latest astronomical probes to the

| | | | | | | |
|---------|----------|------------|--------|------|-------------------|----------|
| Funding | Research | Innovation | Skills | News | Public engagement | About us |
|---------|----------|------------|--------|------|-------------------|----------|

- How to apply
- Funding opportunities**
- > Citizen Science Exploration Grant
 - > Enhancing place-based partnerships in public engagement
 - > ESRC-AHRC Joint Call – ISCF Healthy Ageing Research Director
 - > UKRI-NSFC Joint Call Understanding and Addressing Health and Social Challenges for Ageing in the UK and China
 - > Stephen Hawking Fellowships
 - > Strength in Places Fund
 - > Future Leaders Fellowships
 - > Industrial Strategy Challenge Fund
 - > Global Challenges Research Fund
- Information for award holders and research organisations

Home > Funding > Funding opportunities

Funding opportunities

We provide a range of funding opportunities to enable individuals and groups to pursue world-class research and innovation.

Current calls

Citizen Science Exploration Grant

UK Research and innovation is launching a new £400,000 funding call to encourage researchers and innovators to experiment with citizen science.

Application window: 01 October 2019, 00:00 – 12 November 2019, 16:00

Enhancing place-based partnerships in public engagement

Enhancing place-based partnerships in public engagement is a competitive funding scheme to support eligible research organisations UK-wide to pilot place-based public engagement partnerships and activities.

Application deadline: 21 October 2019

Stephen Hawking Fellowships

The Stephen Hawking Prize fellowships will support and develop the next generation of visionary scientists in theoretical physics at the beginning of their career. UKRI are providing funding for five annual calls delivered jointly by EPSRC and STFC. Round one is now open and intentions to submit must be received by 20 June 2019.

Strategic Priorities Fund

The Strategic Priorities Fund (SPF) builds on the vision of a 'common fund' set out in Sir Paul Nurse's review. The SPF will support high quality research and development priorities which would otherwise be missed – multidisciplinary and interdisciplinary programmes identified by researchers and businesses at the cutting edge of research and innovation.

Current calls

- Landscape Decisions
- UK Climate Resilience
- Greenhouse Gas Removal Demonstrators Programme calls and workshop

Funder Websites

BBSRC
bioscience for the future
Building the bioeconomy

Accessibility Contact us

search

Home Funding

Funding

We provide a range of funding opportunities to enable individuals and groups to pursue world-class bioscience research.

All calls
Funding available for specific initiatives, studentships and fellowships

How to apply
Guidance for creating a high-quality research grant application

Information for reviewers
What you need to know if requested to review a research grant application

Post-application information
What happens next, your obligations if funded and available support/resources

Related links

- Funding news
- Global Challenges Research Fund (GCRF)
- Newton Fund

External links

BBSRC is not responsible for the content of external websites

- #BBSRCfunding on Twitter
- BBSRC funding feed
- Gateway to Research
- Je-S Helpdesk
- Je-S system
- researchfish®

How to apply

Guidance for creating high-quality research grant applications.

The guidance below will cover the majority of applications however, there will be times when a call will have differing requirements. In these instances, additional guidance will be provided in the call information.

Submit your research grant application

- Apply via: [Je-S system](#). Guidance on how to use the system is available on Je-S or you can contact the helpdesk using the details below
- Je-S helpdesk: jeshelp@je-s.ukri.org, 01793 444164 [out of hours please leave a voicemail message]. Open Monday to Thursday 08:30-17:00 and Fridays 08:30-16:30 UK time (excluding bank holidays and other holidays). Please provide your name, organisation and user ID; date and time; which part of the form or system you were working on; and the nature of the problem



Read our grants guide

Our grants guide covers all aspects of research grant funding, including: eligibility, research equipment and application procedures. If you can't find what you're looking for please contact us (see below).



BBSRC research grants: The guide (PDF 387KB)

You may need to download additional [plug-ins](#) to open this file.

Are you eligible?

Read our grants guide

Our grants guide covers all aspects of research grant funding, including: eligibility, research equipment and application procedures. If you can't find what you're looking for please contact us (see below).



BBSRC research grants: The guide (PDF 387KB)

You may need to download additional [plug-ins](#) to open this file.

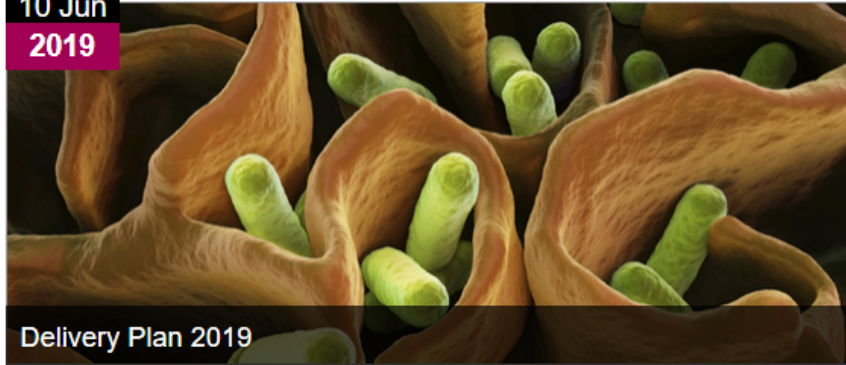
Fit to Strategy

Special national and international / EU initiatives – panels chosen to represent the field – knowledgeable and strongly favour funding in that area. Make sure you connect with their mission statement.

Specialised charities have specific missions – make sure that you fit their mission; but they favour your research area.

Look at delivery plans, mission statements and align

[Home](#) / [News, events and publications](#) / [Strategic and Delivery Plans](#) / [Delivery Plan 2019](#)



10 Jun
2019

Delivery Plan 2019

Related links

- Our vision, mission and strategy

BBSRC's Delivery Plan is available at: [UK Research and Innovation: Delivery Plans](#).

Building on the [Forward Look for UK Bioscience](#), published by BBSRC in 2018, our Delivery Plan 2019 sets out how we will drive forward our ambitious vision for UK bioscience and contribute to the delivery of UK Research and Innovation's (UKRI) objectives. Our plans are structured around three high-level objectives and eight research and innovation priorities:

- Advancing the frontiers of bioscience discovery
 - Understanding the rules of life
 - Transformative technologies
- Tackling strategic challenges

Opportunities for Growth

Exploring three major areas of funding to achieve growth and impact:

- International Development Challenges – around the UN SDGs
- Industrial Partnership funding around technology challenges and enterprise
- Cultural engagement and enrichment
- Aberdeen City Deal

All of these require interdisciplinary responses



Global Challenges Research Fund (GCRF)



A 5-year £1.5 billion funding stream, to ensure that UK research takes a leading role in addressing the problems faced by developing countries.

- challenge-led disciplinary and interdisciplinary research.
- strengthening capacity and capability for research and innovation within both the UK and developing countries.
- Harnessing UK's world-class research base to pioneer new ways of tackling global challenges.
- providing an agile response to emergencies where there is an urgent research need.



Cutting edge research which addresses the problems faced by developing countries

2015 Government Spending Review Outcomes



Promotion of the Grants Academy



NEW: Grants Academy: Conversations on series *Promoting Inter-disciplinary research*

Conversations on .. is a new series of facilitated sessions, over a sandwich lunch, to bring together anyone from within the University (and beyond) with an interest in joining an early ideas discussion on the chosen topic. A list of the upcoming sessions is below, if you are interested in participating please register via the Eventbrite links.

Ideas for new topics? Please submit these to grantsacademy@abdn.ac.uk or speak to your R&I BDO.

Upcoming **Grants Academy: Conversations on.....**

Aberdeen Grants Academy



HEALTH AND NUTRITION WORKSHOP ON THE GLOBAL CHALLENGE RESEARCH FUND

Where: Institute of Medical Sciences Level 7 Conference Room



Managing fellowship applications - Traffic Light Process

Next deadline to return traffic light documents: 22 May 2018

Traffic Light System overview session and Funding Opportunities:

Follow us on Twitter  **@UoAResInnov**

Research and Innovation

<https://www.abdn.ac.uk/staffnet/research/>

Develop a proposal

Preparing

- [Intention to submit](#)
- [Funding opportunities](#)
- [Internal Funding](#)
- [RESEARCH Connect](#)
- [Grant writing tips](#)
- [Fellowship applications](#)
- [Ethics and governance](#)
- [Impact and engagement](#)
- [Data management plans](#)

Finance and costing

- [Costing an application](#)
- [IT costs](#)

Run a project

Management

- [Accepting an award](#)
- [Post award financial management](#)
- [Data protection & GDPR](#)
- [Data storage and archiving](#)
- [IT services for researchers](#)
- [Research data management](#)
- [Reporting](#)

Legal and contracts

- [Contracts for research](#)

Achieve impact

Impact & Knowledge Exchange

- [KTP](#)
- [Consultancy](#)
- [Commercialisation](#)
- [Intellectual Property \(IP\)](#)
- [Maximising impact](#)
- [PERU](#)
- [Working with industry](#)
- [PURE](#)
- [Communications](#) ✉
- [Open Access/Data](#)
- [ORCID](#)

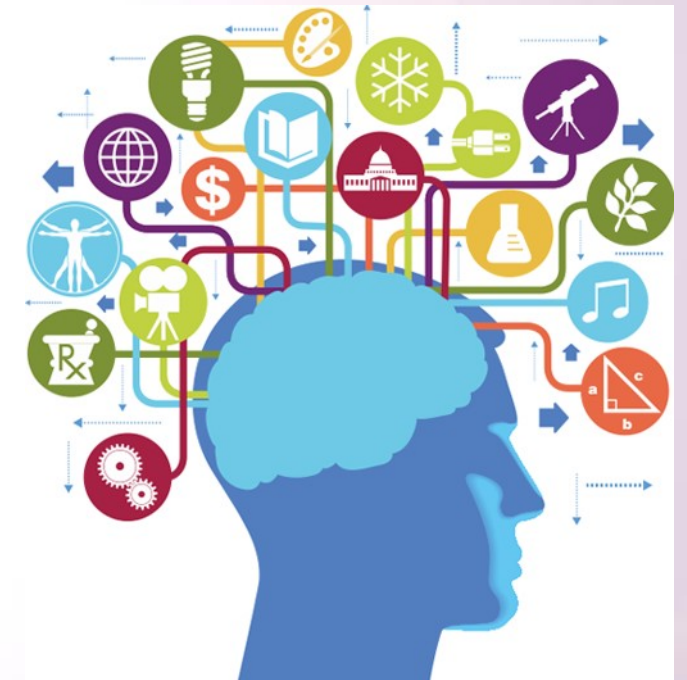
Development

- [Researcher Development](#)
- [Researcher's Toolkit](#)
- [Continuing Professional Development](#)



Grants Academy Supports ...

- Effective horizon scanning
 - Facilitation of early ideas development
 - Supporting interdisciplinary working
 - Pump-priming for GCRF and others
 - Supporting engagement with industry
 - Capacity building in strategic areas
- And more...



Questions and Contact Information



Research and Innovation

Showcase your research

REF2021

Dr Andrew Phillips
Business Development Officer
Biological Sciences

andrew.phillips@abdn.ac.uk

+44 (0)1224 273780

Research and Innovation (R&I) consists of teams of specialist advisors dedicated to maximising the University's research income, identifying and nurturing impact and facilitating interactions with external organisations. R&I are the first point of contact for business, facilitating access to the University's expertise for Consultancy and Continuing Professional Development.

R&I works closely with colleagues in the University's Schools and has detailed knowledge of their research interests and expertise. Dedicated resource is provided to each of our Schools.

Contact Us