



The Aberdeen Grants Academy

Conversations on Series

Emotions

Promoting Inter-disciplinary Research

Aberdeen
Grants
Academy

Research &
Innovation



Grants Academy

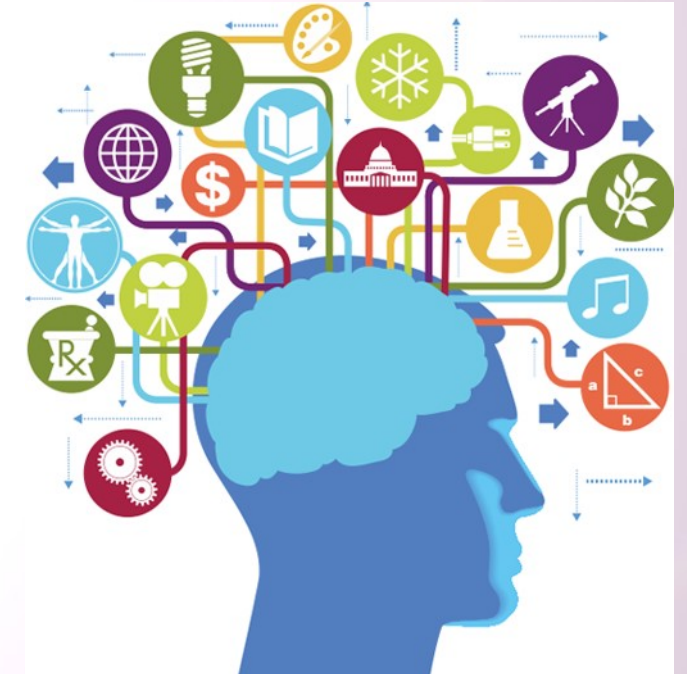


- Support at ALL STAGES of the research grant life cycle: conception of ideas, through development and refinement of an application, to research delivery and realising impact.
- A comprehensive **programme of development.**
- **Enhance our research environment.**
- Offer the ability to be better prepared for opportunities and **enhance our ability to respond to calls.**

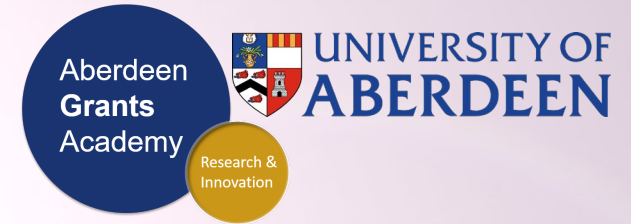
How the Grants Academy Works



- Developed as a series of interwoven elements including sandpits to support the development of ideas and projects, grant writing workshops, rebuttal support, support for delivery of outcomes and outcomes management and more.
- Relevant to today, supports:
 - Effective horizon scanning
 - Facilitation of early ideas development
 - Supporting interdisciplinary working



Grants Academy: Conversations on



Research Policy Committee Away Day (Spring 2018) led to interdisciplinary workshop (end of May) and the catalyst for the conversations on series.

Challenge of bringing together effective consortia once calls have been announced, we want to try to improve our agility by encouraging the development of inter-disciplinary links, ahead of future calls.

NEW: Grants Academy: Conversations on series

Promoting Inter-disciplinary Research

Food Security, Sustainable Diets and Wellbeing: June 2018

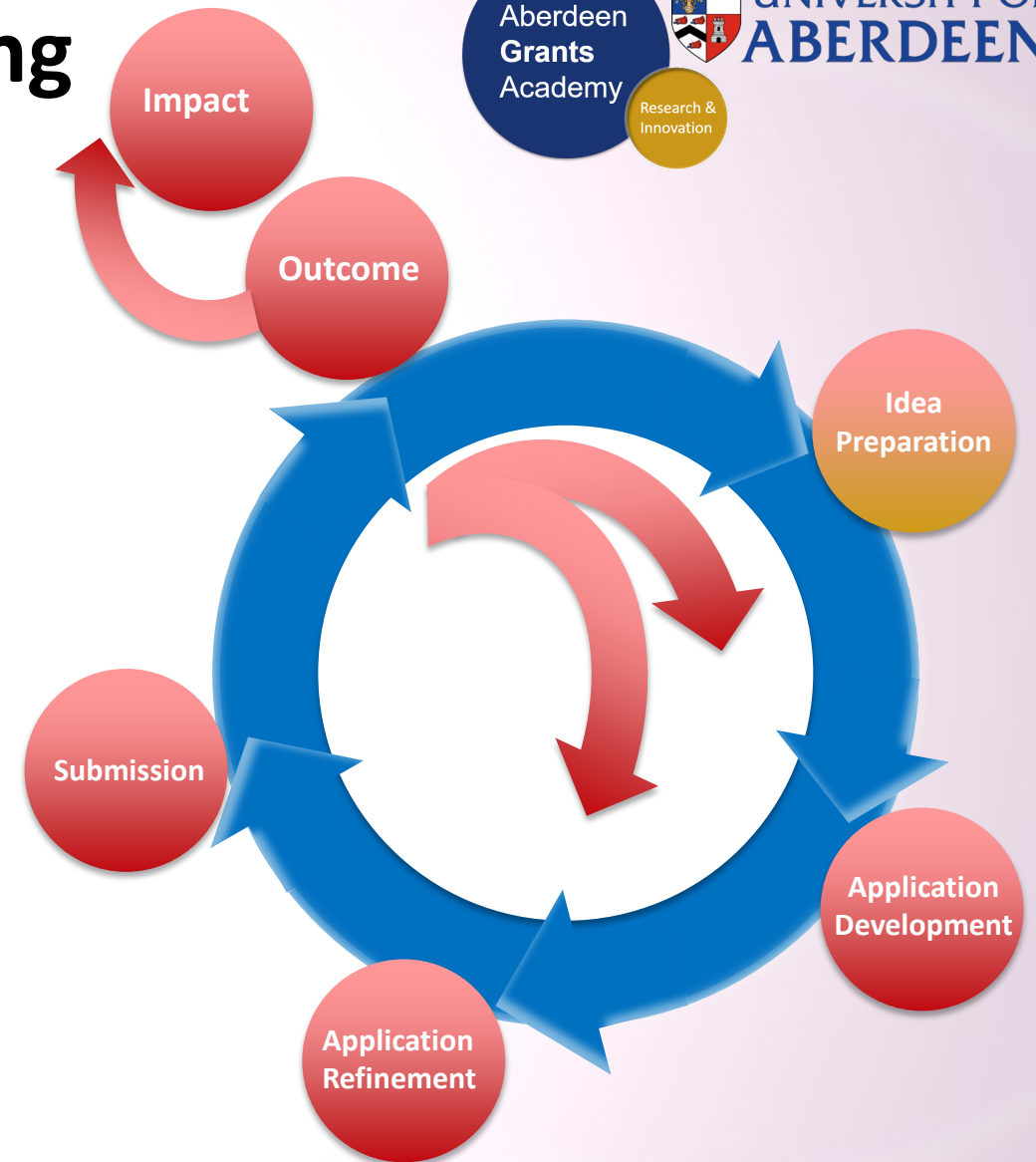
Conversations Just the Beginning

What can we expect from today:

- Networking
- New Collaborations
- Developing Ideas

Hopefully leading to:

- Positioning for Future Calls
- Forming Draft Applications
- Further Dialogue



Conversations on Emotions



Academic Champions: Louise Phillips and Andrew Dilley

Emotions are subjective conscious feelings that are linked to internal psychological and physiological states and influenced by the environment which surrounds us.

They are important influences on our well-being and behaviour. But there is much yet to understand about what emotions are; how they are linked to culture, time and place; and how they guide our choices in life?

How also might the study of emotions be integrated into the study of social, political, economic, and cultural phenomenon?

This Conversation will explore these questions.

Conversations on Emotions

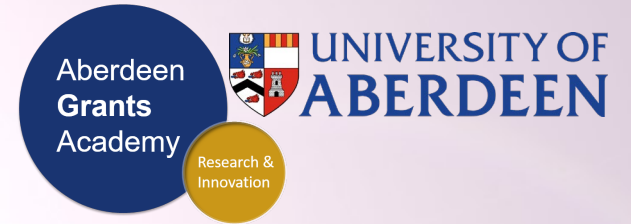


Academic Champions: Louise Phillips and Andrew Dilley

The following list will provide a starting point for our conversations, and also highlights the breadth and potential for future collaborative working across the university in this field.

1. How do emotions interact with cognition to influence our attitudes and behaviour?
2. How does culture influence the way we express and control our emotions?
3. How do the body and the brain influence emotional experience?
4. How we can integrate the study of emotions into other disciplines and research projects?

Elevator Pitches

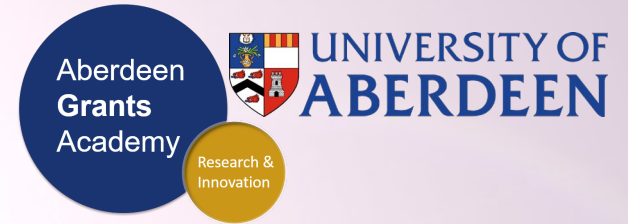


Academic Champions: Louise Phillips and Andrew Dilley

Prior to the facilitated discussion we have a series of short 2-3 minute presentations from:

- Heidi Mehkens (History)
- Anna Bortolan (Philosophy)
- Katherine Hockey (Divinity)
- Katharina Schnitzspahn (Psychology)
- Madge Jackson (Psychology)

Facilitated Discussion



1. How do emotions interact with cognition to influence our attitudes and behaviour?
2. How does culture influence the way we express and control our emotions?
3. How do the body and the brain influence emotional experience?
4. How we can integrate the study of emotions into other disciplines and research projects?

Stage 1: 15 Minutes

Lunch:

Stage 2: 10 minutes

Stage 3: 10 minutes

Stage 4: 10 minutes

Stage 5: 10 minutes

Group Discussion Closing Remarks



1. How do emotions interact with cognition to influence our attitudes and behaviour?
2. How does culture influence the way we express and control our emotions?
3. How do the body and the brain influence emotional experience?
4. How we can integrate the study of emotions into other disciplines and research projects?

RESEARCHconnect

<https://www.researchconnect.co.uk>



The screenshot shows the RESEARCHconnect website interface. At the top left is the RESEARCHconnect logo with the tagline 'an idox solution'. To the right, there's a 'Personalise this page' button, a welcome message for Andrew Phillips, a 'Logout' link, and a 'Helpdesk: 03330 111 666' button. Below this is a navigation menu with items like HOME, ABOUT US, SEARCH, NEWS, MY RESOURCES, LIBRARY, BULLETINS, ADMINISTRATION, INTELLIGENCE, TRAINING, and CONTACT US. A dark banner below the menu contains the text 'RESEARCHconnect - An all-encompassing research funding solution, providing comprehensive grants information to the UK research community.' and two search buttons: 'Search RESEARCHconnect' and 'Search POLICYfinder'. A yellow banner below the banner says '*Latest product developments*' - click here to discover all with our What's New? flyer (pdf). The main content area is divided into four columns: 'Research funds added' with a list of dates and titles like 'ISFG Scientific Prize' and 'ECTS/Eli Lilly Healthcare Provider Scholarships 2017'; 'Latest research calls' with dates and titles like 'Horizon 2020 - Societal Challenges - Secure Societies' and 'NERC Open Knowledge Exchange (KE) Fellowship Scheme'; 'Upcoming research deadlines' with dates and titles like 'Anglo-Danish Society Scholarships' and 'APS EEP Edward F Adolph Distinguished Lectureship'; and 'Research news' with dates and titles like 'NERC and ESRC Announce New Knowledge Exchange Fellowship Opportunity' and 'Advance Notice of NERC Innovative Monitoring Approaches Call'. On the right side of the main content area is a 'Twitter feed' widget showing tweets from @RESEARCHconn3ct, including one about 'UK Government proposes amendments to Higher Education and Research Bill'. At the bottom of the widget are 'Embed' and 'View on Twitter' links.

Looking for Research Funding Opportunities?
The University of Aberdeen subscribes to the web-based funding service at [RESEARCHconnect](https://www.researchconnect.co.uk) a comprehensive and reliable source of funding opportunities. You can save complex searches to re-run at a later date or set-up automated email alerts for funding opportunities. Guidance and further information available [here](#).