

COVID-19 Health and Adherence Research In Scotland (CHARIS)

www.abdn.ac.uk/CHARIS | @CHARIS CVD19

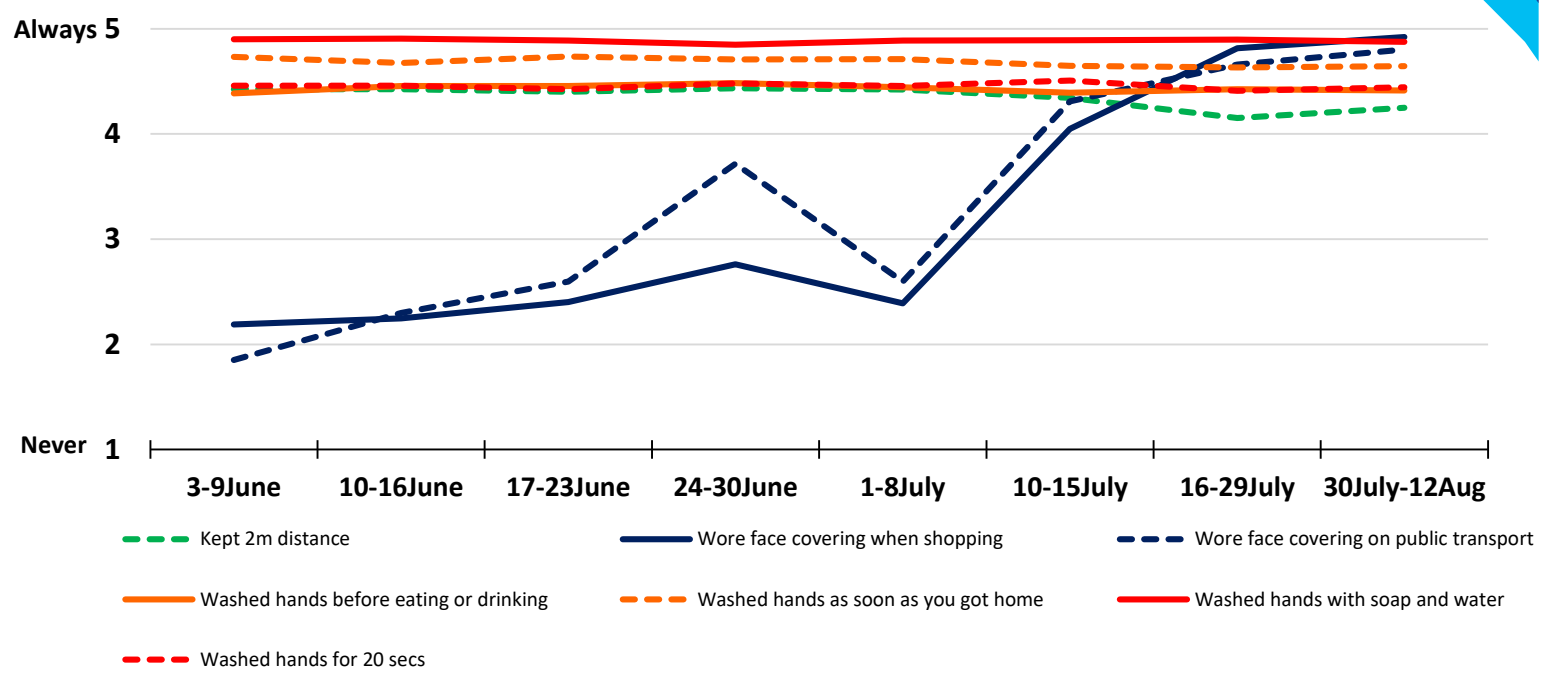
3rd June-12th Aug
Route Map: Phase 1 to Phase 3



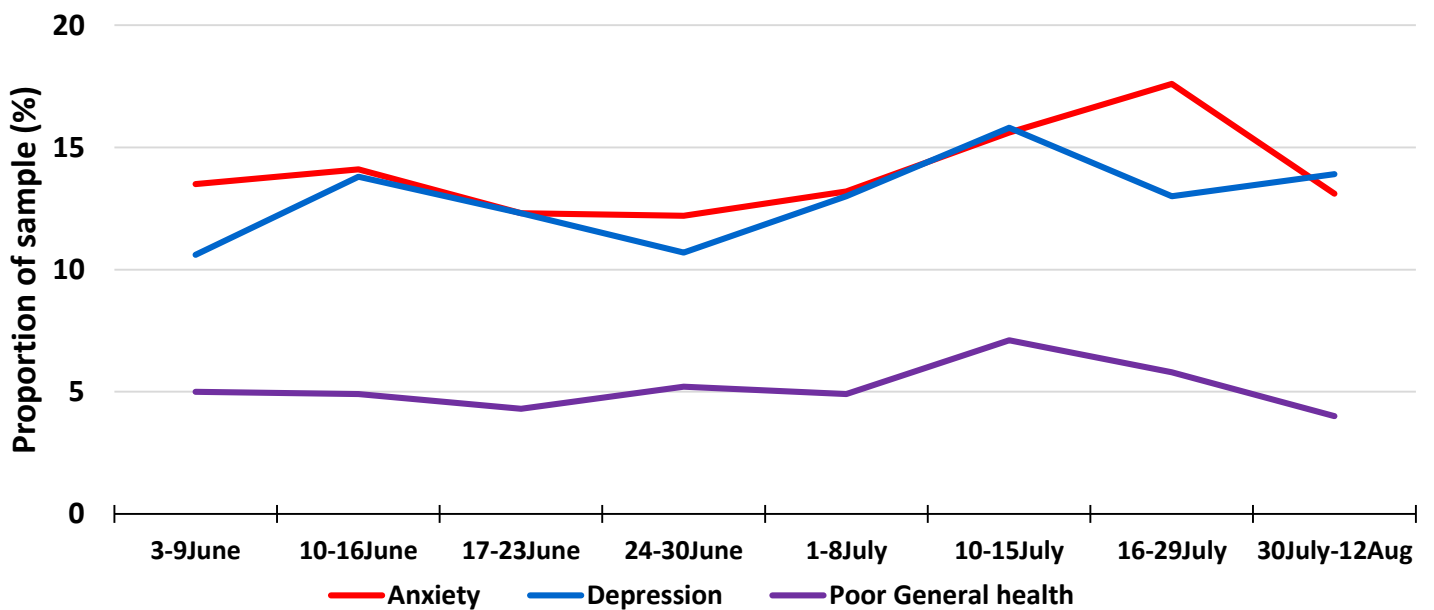
1495
UNIVERSITY OF
ABERDEEN

CHANGE IN ADHERENCE and HEALTH OVER TIME

Transmission-Reducing Behaviours Over Time



Mental and General Health Over Time



What is CHARIS? CHARIS is a research study that uses behavioural science to understand how people in Scotland respond to the Coronavirus pandemic. CHARIS is a telephone survey with a nationally representative sample of 500 adults. It began on the 3rd of June and will run for 5 months.