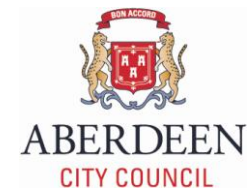


# IMCORE WORKSHOP

## Coastal Adaptation Strategy for Climate Change in Aberdeen and Aberdeenshire

01/03/2011



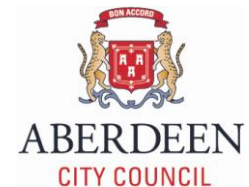
# Welcome

- Delegates
- IMCORE Partners



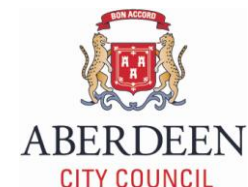
# IMCORE

- Innovative Management for Europe's Changing Coastal Resource
- project funded under the Interreg IVB programme
- 15 partners from across north-west Europe
- not so much about predicting effects but offering suggestions of how we can all adapt to climate change



# IMCORE – Aberdeen ECN

- The main objectives and issues to be addressed in IMCORE by the Expert Couplet Node are:
  - Issues of Climate Change for local population and stakeholders in particular coastal flooding and erosion.
  - Education workshops to contribute to raising awareness of the problem within companies and organization, with the goal of integrating climate change issues into their plans.



# Identification Issue Workshop

- The aim of this workshop (20/09/2009) was to provide an introduction to climate change and the potential issues it will create in the future
  - Increased temperatures from 2° to 3.5° C by 2080
  - Increase in winter rainfall by 25%
  - More intense storms
  - Greater incidence of strong winds and larger waves
  - Increased flood risks from rivers and seas, as well as possible sea level rise of 61cm

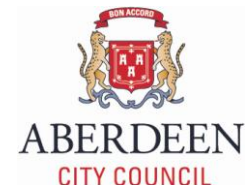
*Source UK Climate Projections 09*

# Scenarios Workshop

- The aim of this workshop (31/05/2010) was to raise awareness about the Impact of Climate Change on Flooding in Coastal Communities in Aberdeen and Aberdeenshire. Delegates were given the opportunity to investigate some potential effects of Climate Change on flooding scenarios. They used spatial datasets, GIS technology and other tools to visualize the flooding scenarios
- The content of the delegates' presentations showed that education on flood risk was successful with the areas around the river Don, Dee and harbour being highlighted by all groups as having the biggest potential to flood when sea level rises.

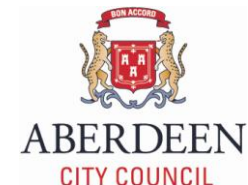
# Coastal Adaptation Strategy for Climate Change - Workshop

- Developing a coastal adaptation strategy for Aberdeen and Aberdeenshire
- Use PESTLE analysis and backcasting scenario techniques to develop the strategy
- Learn from the good practice and experience of two other IMCORE Partners: Belgium and East of England



# PESTLE Analysis / 9h30-12h

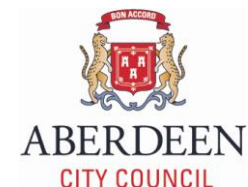
- Selected scenario:  
Coastal flooding in Aberdeen and Stonehaven is predicted to increase in the future and the aim is to reduce the socio-economic impact caused by this flooding to a minimum
- Use PESTLE analysis:  
Political, Economic, Social, Technological, Legal and Environmental analysis
- Group work: Brainstorming, Final analysis and PPT Presentation



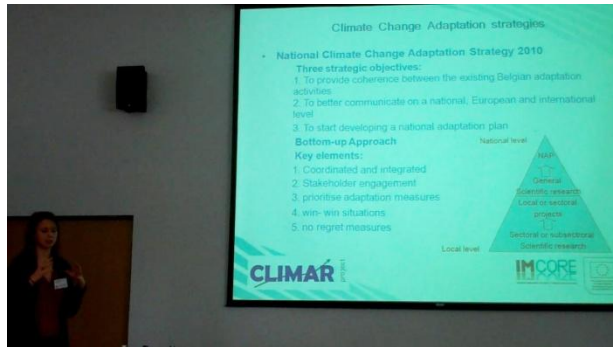


# Back Casting Scenario / 13h30 – 15h30

- Selected scenario:  
Coastal flooding in Aberdeen and Stonehaven is predicted to increase in the future and the aim is to reduce the socio-economic impact caused by this flooding to a minimum Developing a coastal adaptation strategy for Aberdeen and Aberdeenshire
- Fundamental to the process is to start this analysis from the preferred future and then working backwards to identify actions that will connect the future to the present
- Group work: back casting actions diagrams and PPT presentation



# Group work...



Report and outputs will be available soon...

