

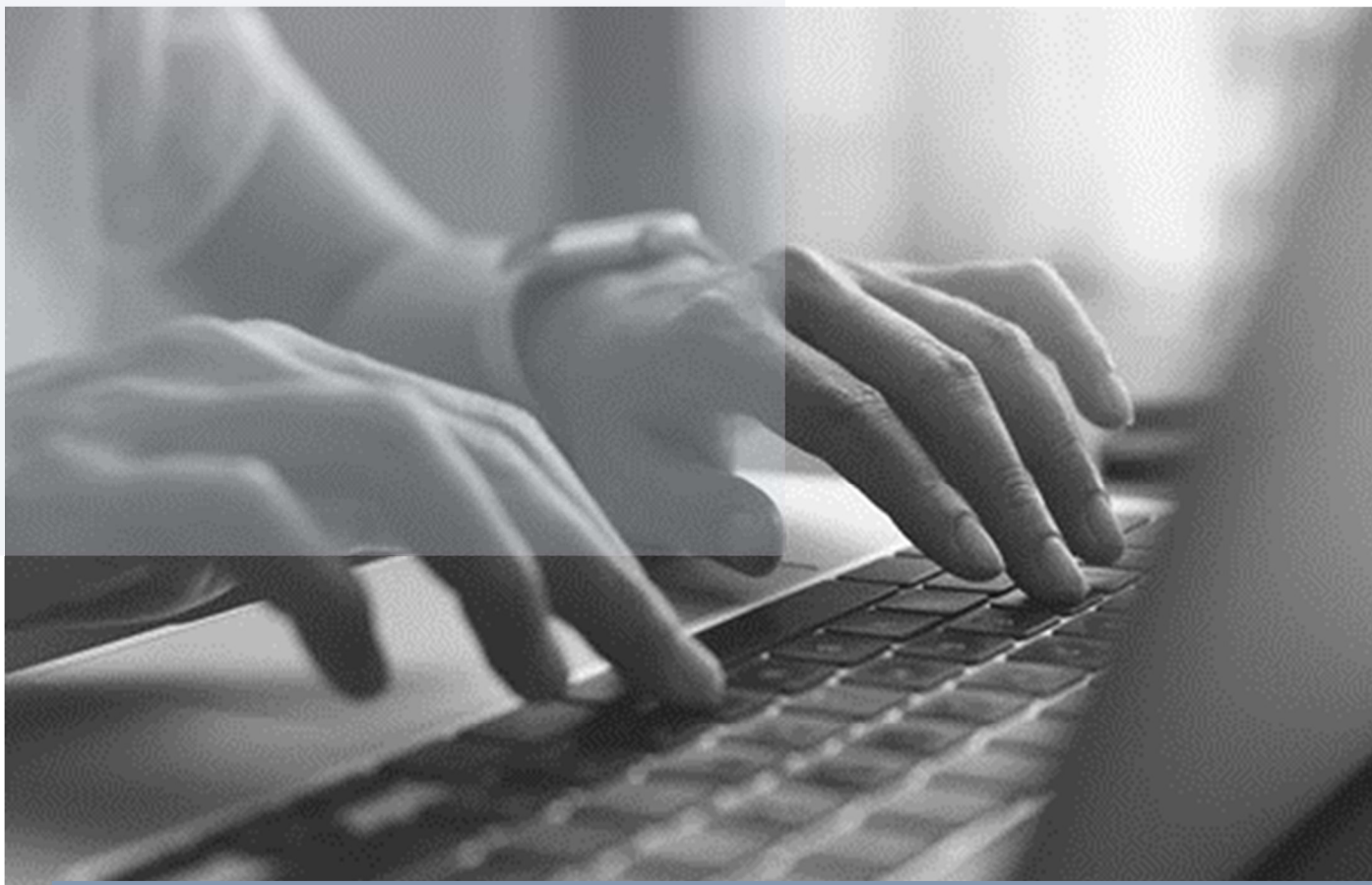
INTELLECTUAL PROPERTY POLICY

NIHR GLOBAL HEALTH RESEARCH
GROUP ON PROMOTING
CHILDREN'S AND ADOLESCENT'S
MENTAL WELBEING IN SUB-
SAHARAN AFRICA

FUNDED BY
NIHR
National Institute
for Health and
Care Research



UKaid
from the British people



About the Project

Copyright © 2023 University of Aberdeen. This work is licensed under CC BY 4.0. To view a copy of this license, visit <http://creativecommons.org/licenses/by/4.0/>

In line with the terms of this license, the original document must be cited if reused and any changes must be indicated.

This research was funded by the NIHR (NIHR133712) using UK aid from the UK Government to support global health research. The views expressed in this publication are those of the author(s) and not necessarily those of the NIHR or the UK government, the Court of the University of Aberdeen, the Board of Directors of the University of Rwanda, the Board of Directors of Addis Ababa University, the Board of Directors of The Sanctuary, or our International Advisory Board.

Summary

The World Health Organisation (WHO) recommends preventative mental health interventions in schools. When children and adolescents focus on being mindful, they slow down, take their time, and focus on something in a way that is both relaxing and stress-free. Practising mindfulness makes children and adolescents happier. It improves their attention span, helps them manage stress, increases their sense of well-being, and improves their communication skills. It also improves their school performance. We do not know if mindfulness improves the well-being of children and adolescents in Sub-Saharan Africa. There is a need to know if it does so and if it would be a good use of government resources. We have designed a project which will help answer these questions.

We will deliver the project in Ethiopia and Rwanda between 2022 and 2026. Rwanda and Ethiopia are two of the poorest countries in the world. The wellbeing of children is poor in both countries, and school attainment is low. We will research ways of providing an affordable and acceptable mindfulness intervention that improves children's and adolescents' well-being. We will work with parents and policymakers to agree on delivering and testing it. Teacher-educators working with primary school teachers will develop an appropriate mindfulness intervention. Teachers involved in developing the intervention will train other teachers in their schools. Teachers will deliver the intervention as part of the primary school curriculum so that it reaches all children.

Further information is available at www.abdn.ac.uk/nihr-camw



GHRUG Project: NIHR133712 - NIHR Global Health Research Group on Promoting Children's and Adolescent's Mental Wellbeing in sub-Saharan Africa.

Intellectual Property Policy

Table of Contents

About the Project	2
Summary	2
Intellectual Property Policy	3
Background	4
Aims and Objectives	4
Scope of the Policy	4
Definitions	5
Roles and Responsibilities	5
Guiding Principles	6
Ownership of Intellectual Property	6
Registration and Exploitation of Intellectual Property	6
Seeking Advice and Support on Intellectual Property	7

Background

The main objective of this project is to develop, implement and evaluate an affordable, effective, and trusted mindfulness intervention delivered in schools to improve the mental well-being of children and adolescents in Rwanda and Ethiopia. The primary output is to develop a mindfulness intervention led by Rwandan and Ethiopian educators for delivery in schools. The intervention is to be designed to promote the well-being of children and adolescents, and to be acceptable to policy actors, teachers and communities, including children and adolescents.

In accordance with the terms and conditions of the Grant Award and specifically relating to Clauses 16 and 17 of the **Contract** we have developed this **Intellectual Property (IP)** Policy. This Policy is compatible with the policies of the National Institute of Health and Care Research (NIHR) concerning the management, dissemination and/or exploitation of IP used in and/or created through research using NIHR funding.

This policy should be read in conjunction with sections 8 (Intellectual Property) and 10 (Publications) of the **Collaboration Agreement (CA)**. The terms of the Contract and the CA take precedence where there is a disagreement between them and this Policy.

Aims and Objectives

The main objective of this policy is to provide guidance on identification, management and protection of intellectual property (IP) that is contributed to the project from the partners (**Background IP**) and that arises from the project (**Foreground IP**) and the use and exploitation of **Research Data**.

The aim of the policy is to ensure that IP is identified and protected according to NIHR requirements and guidelines.

Scope of the Policy

1. The policy applies to investigators employed to work on the project including co-Is, PDRs and PhD students.
2. It applies to all Background IP contributed to the project from the project partners.
3. It also applies to all Foreground IP arising from the project including but not limited to:
 - a. Research Data
 - b. Reports
 - c. Know-how
 - d. Copyrights
 - e. Data sets and databases;
 - f. Research Tools
 - g. Inventions
 - h. Designs

- i. Trade marks

Definitions

The following definitions are used in this IP policy:

Background IP means all Intellectual Property used in connection with the project which has been generated prior to or outside the scope of the project.

CA means the collaboration agreement between the Parties dated 09th May 2023.

Contract means the funding agreement from NIHR to the University of Aberdeen dated 6 May 2022 regarding GHRUG Project: NIHR133712 – NIHR Global Health Research Group on Promoting Children’s and Adolescent’s Mental Wellbeing in sub-Saharan Africa.

Creative Commons CC-BY licence means the license that allows reusers to distribute, remix, adapt, and build upon the material in any medium or format for only so long as attribution is given to the creator – for more information see <https://creativecommons.org/about/cclicenses>.

Foreground IP means all Intellectual Property generated during the project by one or more of the parties.

Intellectual Property or IP means intellectual property of any description including but not limited to all inventions, designs, information, specifications, formulae, improvements, discoveries, know-how, data, processes, methods, techniques and the intellectual property rights therein, including but not limited to, patents, copyrights, database rights, design rights (registered and unregistered), trademarks, trade names and service marks, and applications for any of the above.

Joint IP means Intellectual Property created by more than one partner acting jointly.

Party means any of the University of Aberdeen, Addis Ababa, University, the University of Rwanda or The Sanctuary (sub-contracted to the University of Aberdeen via a Services Agreement).

Research Data means all information, data, know-how, results, data sets, inventions, software and other Intellectual Property arising through conduct of the project.

Roles and Responsibilities

1. The Project Director (J-L at the University of Aberdeen) (p.abbott@abdn.ac.uk) is responsible for compliance with this policy in accordance with relevant University of Aberdeen policies, legislation, and funder terms and conditions.
2. The Project Manager (isabel.stanley@abdn.ac.uk) will keep a record of intellectual property generated through the project, as required by the Contract. Reviews of

intellectual property and its management by the research team shall take place through the quarterly Executive Committee and associated work package sub-committees.

3. Work Package (WP) leaders are responsible for identifying Foreground IP in the Results and notifying the Project Manager.

Guiding Principles

The mission of the NIHR is to improve the health and wealth of the nation through research. For this project, the principles of Patient Benefit will apply and the terms of ODA funding must be followed.

In addition to the mindfulness intervention, this project is expected to produce data sets and academic papers. It is expected that Patient Benefit will be maximised through dissemination, but the team will follow the terms of the Contract with regard to Intellectual Property and Exploitation of Intellectual Property.

Consequently, it is expected that research outputs, including research data sets, peer-reviewed publications, and training resources, will be made open access, in line with sections 8 (Publicity, Publication and Branding) and 11 (Rights to Research Data) of the Contract.

Ownership of Intellectual Property

Ownership of IP will be determined by the CA which is consistent with the terms of the Contract.

Briefly:

1. Ownership of Background IP is not affected by the Contract
2. Foreground IP is owned by the University of Aberdeen, which may in turn grant licences to the other Parties.
3. The CA sets out that results will be published under a Creative Commons CC-BY licence.

Registration and Exploitation of Intellectual Property

1. The Parties must consider whether any of the Research Data or Foreground IP is registrable IP and also the potential for commercialisation and protection of IP prior to publication or presentation of Research Data.
2. The Project Director must notify NIHR in advance of any proposed publication of any registrable Foreground IP.
3. In the event that any Foreground IP is produced that is exploitable or should be protected by registration, the Project Director will bring to the attention of the Commercialisation Manager (a.lewendon@abdn.ac.uk) at Research & Innovation at

the University of Aberdeen to discuss protection of Foreground IP prior to publication or other dissemination.

4. Any Party wishing to exploit Foreground IP shall notify the Project Director and no exploitation shall occur prior to obtaining written permission from the University of Aberdeen and NIHR.
5. The parties acknowledge that prior written consent from NIHR must be obtained prior to any commercial use of the Foreground IP including Research Data.
6. The terms of the University of Aberdeen's Policy for Intellectual Property Exploitation and Revenue Sharing will apply to any revenue received from exploitation. Under this policy the University of Aberdeen will reward inventors and contributors to this project through sharing with them, and their employers, the proceeds of exploitation.

Seeking Advice and Support on Intellectual Property

1. A Party or researcher seeking advice and support about Intellectual Property in relation to the project can, in the first instance, contact the Project Director (p.abbott@abdn.ac.uk).
2. For information on the project's intellectual property records, a Party or researcher can contact the Project Manager (isabel.stanley@abdn.ac.uk).
3. Individual institutions (a 'Party') will have their own institutional guidance around intellectual property. The Contract and CA should be referred to in an instance of conflict between an institution's guidance and this policy.
4. For further advice, the NIHR Intellectual Property Unit can be contacted at ip.unit@nihr.ac.uk.

Ann Lewendon

16th May 2023 final version.

End of document.