

## CHERI BLOSSOM

### August Cheri Blossom Seminar

The August seminar was introduced by Professor Vikki Entwistle and presented by Dr Tong Wei Yew and Dr Victor Loh from the National University of Singapore's Yong Loo Lin School of Medicine. The presented topic was "Transforming traditional clinic consultation into meaningful conversations for people living with diabetes - the Singapore experience in training for healthcare professionals in personalised care and support planning based on the Year of Care approach". The seminar was hugely successful with the experience and insights being highly resonant with practical applications for the University's medical education work, and also for the UoA's research interest relating to person centred care.

Tong Wei Yew is a Senior Consultant in the Division of Endocrinology at the National University Hospital, and Victor Loh is a Senior Consultant Family Physician at Pioneer Polyclinic. Vikki Entwistle, is the Chair in Health Services Research and Philosophy in the Health Services Research Unit.



## NEXT CHERI BLOSSOM SEMINAR

Date	Online / in person	Time	Presenter	Title
21/09/23	Online (Teams)	1 - 2pm	<b>India Pinker,</b> Postdoctoral Fellow, Public Health Research, Luxembourg Institute of Health, Department of Precision Health	From Theory to Practice: Empathy Training for Interprofessional Health Education

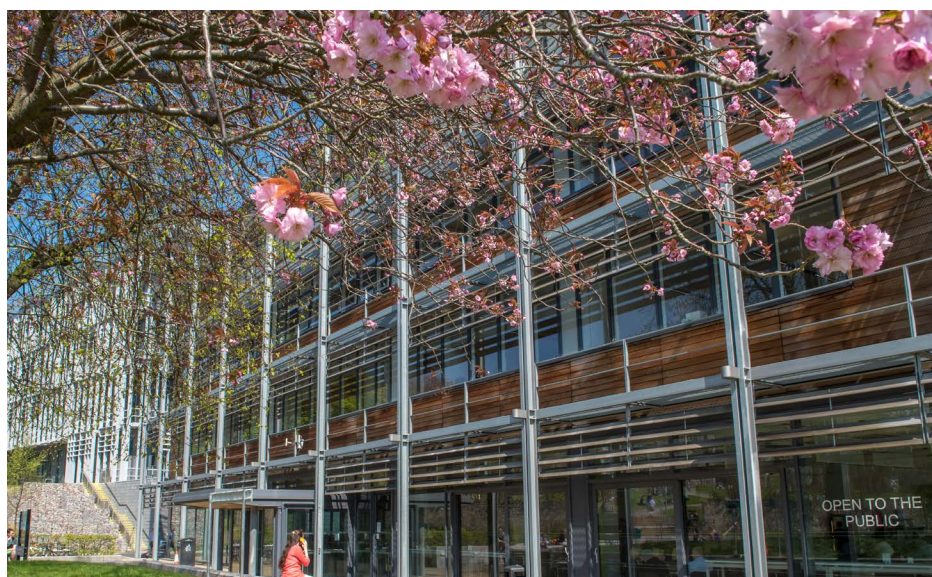
## NEXT CHERI BLOSSOM SEMINAR

The seminar will be presented on Teams online and accessed with the following details:

**Join on your computer, mobile app or room device**

[Click here to join the meeting](#)

Meeting ID: 355 919 239 518 | Passcode: 6gK9kR



## CONGRATULATIONS!

### Professor Amudha Poobalan

Huge congratulations to Amudha who has recently been promoted to Professor. Please join the team in wishing Amudha every success.



## MSC CLINICAL EDUCATION – CONGRATULATIONS!

Congratulations to all students who have recently completed the PG Cert and Diploma in Clinical Education. We are delighted that a number of students are continuing their studies with us and progressing to the next stage of their Master's degree studies. Special congratulations to Dr John Mckeown and Dr Lois Gall who have both completed their degree and achieved a Masters degree in Clinical Education. Well done!

We are looking forward to the new cohort of PG Cert students beginning their studies with us. If medical education is something you are interested in exploring further, please don't hesitate to contact Lorraine Hawick (MSc Clinical Education Programme Coordinator):

[clined@abdn.ac.uk](mailto:clined@abdn.ac.uk)



Dr John Mckeown



Dr Lois Gall

## MARIANNA DWORAKOWSKA ACHIEVES AN MSC

Marianna Dworakowska, CHERI Research Assistant, was awarded the MSc in Applied Psychology in July. Marianna said “the time on my course was filled with hard work and many sleepless nights but was also extremely rewarding. My understanding of the methodology and the nature of science expanded significantly, and the way I see the world has changed forever. I hope to pursue a career in a psychology-related field, most likely in research. The MSc award is only the beginning of a bigger journey.”

CHERI would like to congratulate Marianna on her MSc qualification and wish her the very best in her future career.



Marianna Dworakowska

## PUBLICATIONS

Dr Adarsh Shah had the last of his PhD related papers published:

### Integrating simulation into surgical training: a qualitative case study of a national programme

Shah, A.P., Cleland, J., Hawick, L. Walker, K.A., Walker, K.G. Integrating simulation into surgical training: a qualitative case study of a national programme. *Adv Simul* 8, 20 (2023).

<https://doi.org/10.1186/s41077-023-00259-y>



Dr Adarsh Shah



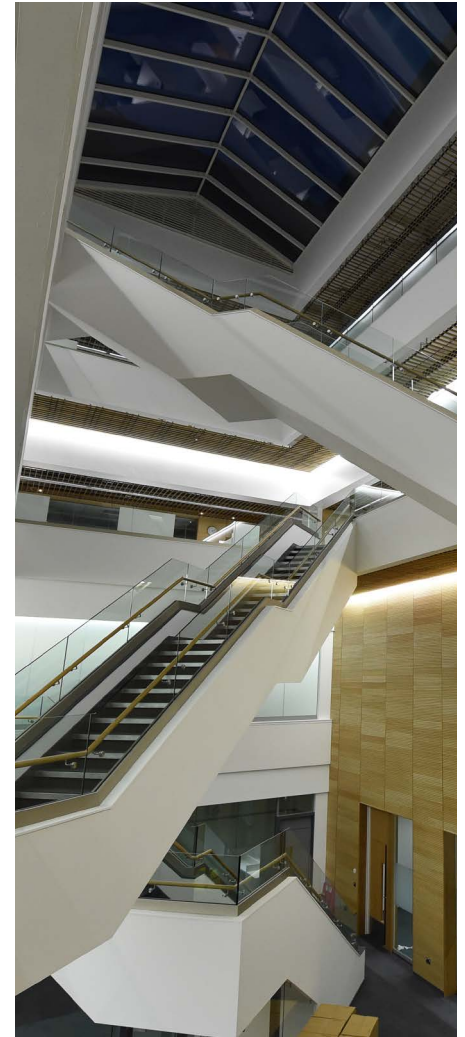
**SCHOOL HIGHER  
EDUCATION RESEARCH  
GROUP MEETING -  
TUESDAY 26TH SEPTEMBER**

The first meeting will be on Tuesday 26th September 2023 at 1.00-2.00pm in the Level 2 Seminar Room, 2.046 in the

Rowett Institute building. The meeting is to discuss ideas for the newly formed group. If you would like to be included in the invitation and included on the circulation list please contact

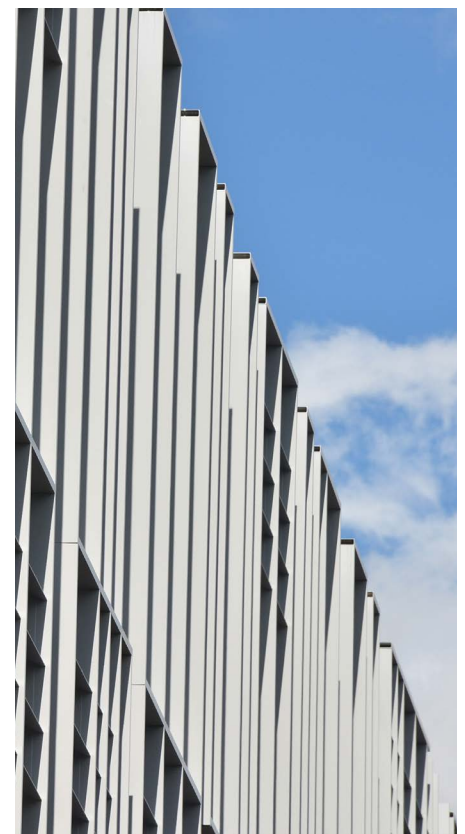
[cheri@abdn.ac.uk](mailto:cheri@abdn.ac.uk)

[ruth.obrien@abdn.ac.uk](mailto:ruth.obrien@abdn.ac.uk)



**DATES TO REMEMBER**

Date	Online / in-person	Time	Presenter	Title
21/09/23	Online (Teams)	1-2pm	<b>India Pinker,</b> Postdoctoral Fellow, Public Health Research, Luxembourg Institute of Health, Department of Precision Health	From Theory to Practice: Empathy Training for Interprofessional Health Education  <b>Join on your computer, mobile app or room device</b> <a href="#">Click here to join the meeting</a>  Meeting ID: 355 919 239 518 Passcode: 6gK9kR
26/09/23	In-person Level 2 Seminar Room 2.046, Rowett	1-2pm	CHERI	School Higher Education Research Group meeting



**GET TO KNOW...**

Bayram Yilmaz



**1. Could you tell us about your role at the university?**

I am a Lecturer in Psychometrics at CHERI. My role involves providing assistance in the psychometric components of both summative and extensive formative assessments within the MBChB program. I extend my support to implementing similar methodologies across various programs within the SMMSN.

**2. What's the most exciting part of your job?**

Extracting valuable insights from the data I acquire and devising methods to visually represent this information, aiding others in comprehending the narrative embedded within the data.

**3. What brought you to the University of Aberdeen?**

I had been working at a faculty of education for about ten years when I decided to make a slight career shift toward Medical Education. I applied for a couple of positions within and outside of the UK. UoA came highly recommended by former colleagues – they couldn't say enough about the atmosphere and the staff. Plus, I did some research on Aberdeen and found out it's a fantastic place for families.

**4. What are your special areas of interest?**

Programme evaluation, scale development, and multilevel data modeling.

**5. What are your work priorities at the moment?**

Currently, my top priority is to develop a system to semi-automatize the analysis of OSCE (Objective Structured Clinical Examination) data. I am working closely with our top-notch technical team on that.

**6. What future projects would you like to be involved in?**

I am eager to explore the factors that contribute to resilience in educational and professional settings. Also, I am hoping to develop international collaboration projects that lead to comparative studies.

**7. Do you have a mantra both professionally and personally?**

Yes, my mantra is "In omnia paratus" (prepared for all things). It guides me to tackle challenges and help others as much as possible.

**8. How do you like to relax outside work?**

Outside of work, I enjoy spending quality time with my family. Scotland has so much to offer in terms of unexplored places, so we're on a mission to discover them. It's a wonderfully relaxing way to unwind.

**9. Do you have any hidden talents or fun facts about yourself?**

Here's a fun one: In the past, I had a knack for doing impressions of over 10 Turkish singers and even a few politicians. Although I've taken a break from that for a while now!

